



Upgrades

iBook/iBook Special Edition





Overview

Customers may wish to upgrade iBook with additional RAM or an AirPort Card. Instructions for performing these upgrades are contained in the user's manual. A more detailed version is included in this chapter to help you if you are asked to do this for customers.

Important: Taking the computer apart beyond upgrading RAM or adding an AirPort Card may void the customer's warranty.





AirPort Card Installation

Before you begin, unplug the AC adapter.

1. Use a coin or key to turn the battery cover screws a quarter turn to the left. The screws will pop up but not come out all the way.
2. Remove the battery cover and pull the battery out of its compartment.





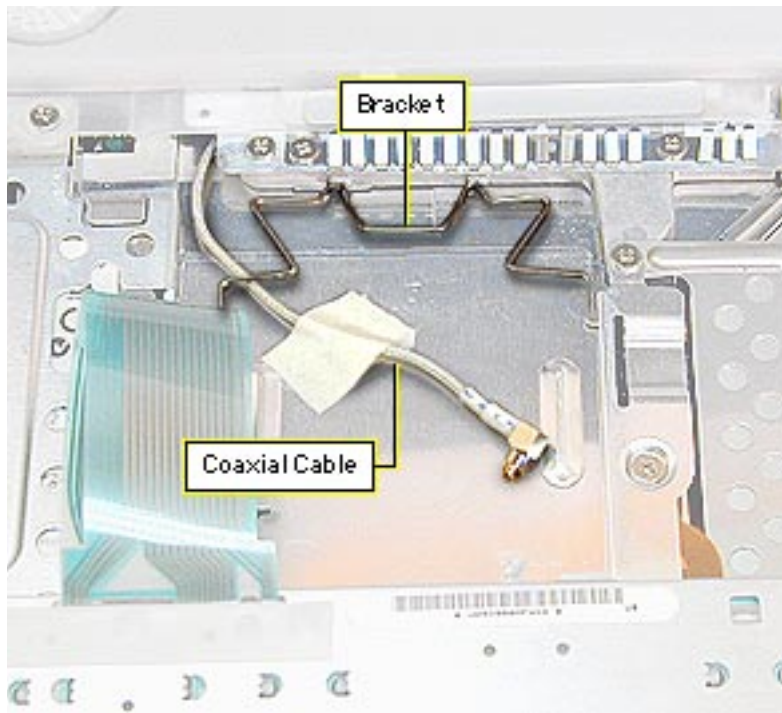
3. Turn the computer over, open it, and place a cloth over the palmrest to protect the surface.
4. If the keyboard is locked, turn the keyboard lock (located to the left of the num lock key) a half turn in either direction until the tab clears the plastic of the top case.





5. Press down on the two keyboard release tabs (located on the keyboard between the F1 and F9 keys), and slide them toward you.
6. When the keyboard pops up, move it away from you to release the tabs in the front.
7. Turn the keyboard over and lay it on top of the palmrest.





8. Pull the bracket handle toward you to free the top edges from the EMI shield.
9. Remove the tape from the coaxial cable and move the cable to the side.
10. Slide the AirPort card into its connector under the top case with the AirPort ID number facing up.





11. Attach the coaxial cable to the AirPort card.

12. Push the bracket down over the coaxial cable and catch the top edges under the EMI shield.

Important: After installing an AirPort Card into a new iBook you must press Option-S when restarting the computer. This ensures the customer will see the Setup Assistant (a movie and setup instructions). If these keys are not pressed down each time the technician restarts the computer after an upgrade, the Setup Assistant file will execute, disable itself, and the customer will never see it.





Memory

The iBook comes with a minimum of 32 MB of memory soldered on the logic board. Newer iBooks and iBook Special Edition have 64 MB soldered on the logic board.

One RAM expansion slot can accommodate a single 1.25-inch SO-DIMM. iBook Special Edition and iBook models with 64 MB on the logic board can support up to a 1.35-inch, 256 MB SO-DIMM.

Important: Use only SO-DIMMs. Other devices may physically fit in the expansion slot, but they are not compatible.





iBook Memory Configurations

iBook Model	RAM on Logic Board	Supported SO-DIMM Sizes	Maximum Supported RAM
Original Release	32 MB	32, 64, 96, or 128 MB	160 MB
Second Release	64 MB	32, 64, 96, 128, or 256 MB	320 MB
Special Edition	64 MB	32, 64, 96, 128, or 256 MB	320 MB





iBook Memory Information	
RAM Speed	66 MHz (15 ns)
RAM Type	144-pin SDRAM
RAM Voltage	3.3 volt, PC 66 compliant
Virtual Memory	1 GB
Soldered Video SDRAM	4 MB
Number of VRAM Slots	none

Note: Use SO-DIMMs only. EDO or SGRAM devices may fit in the slots, but several beeps will be heard at startup.



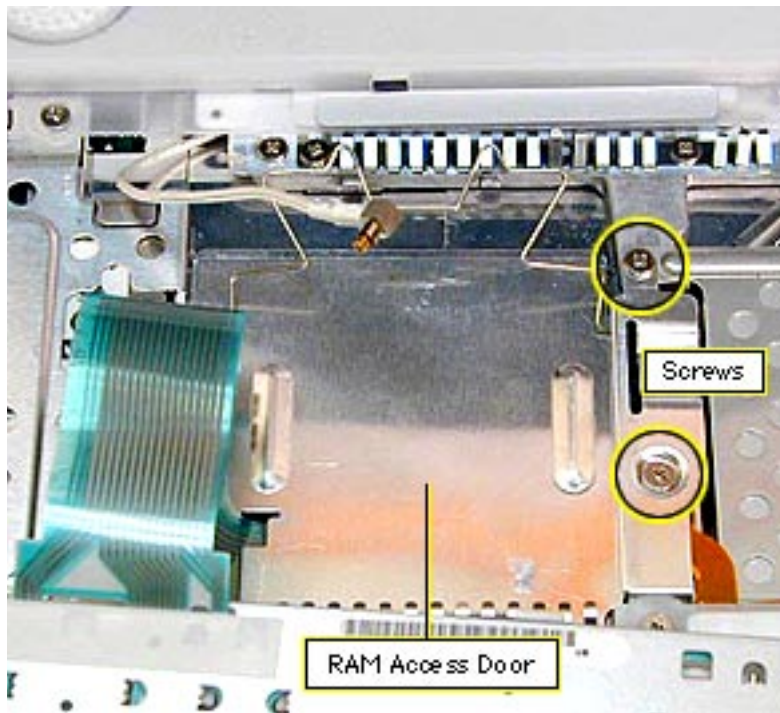


RAM Installation

Before you begin, remove the following:

- AC adapter
- Battery
- AirPort Card (if present)

1. Remove the two Phillips screws on the right side of the RAM access door.
2. Lift the RAM access door out.
3. If a RAM card is in the slot under the RAM access door, pull the snaps on each side of the RAM connector to the





sides until the RAM card pops up.

4. Pull the RAM card straight out to remove it.
5. Position the new RAM card so the notches in the card line up with the notches in the slot, and insert the card into the slot at an angle.
6. When the card is firmly seated in the slot, press down on the card until the snaps lock into place.

Important: After upgrading memory on a new iBook you must press Option-S when restarting the computer. This ensures the customer will see the Setup Assistant (a movie and setup instructions). If these keys are not pressed down each time the technician restarts the computer after an upgrade, the Setup Assistant file will execute, disable itself, and the customer will never see it.

